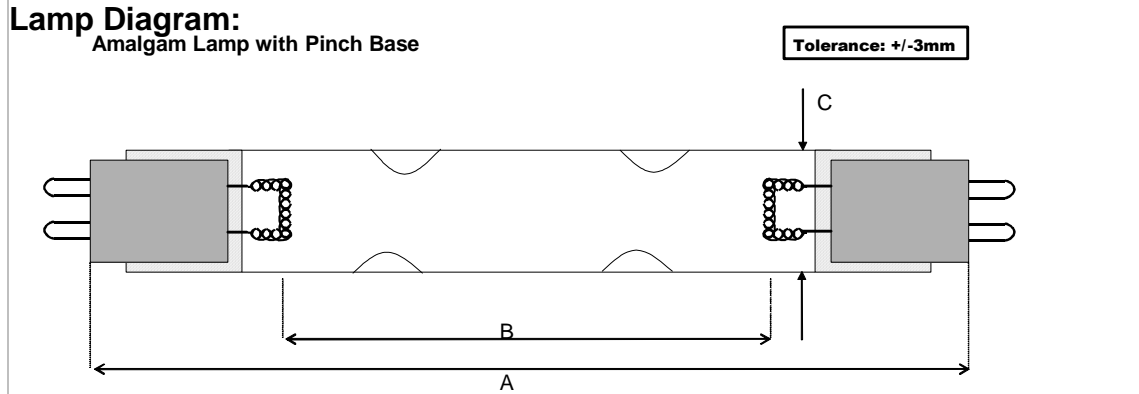


Lamp Type: GIA1200T8LCA/2S13/CB-006  
SLR25113

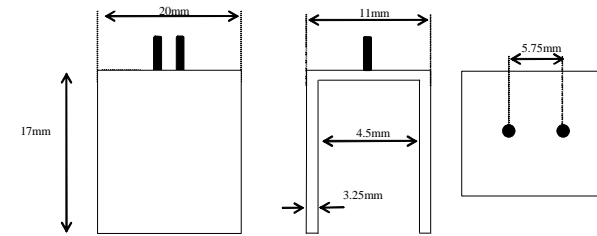
Spec Number:  
2015

*Engineering Specification Sheet*



A208-06-CP0 HD T10 Crimp Base

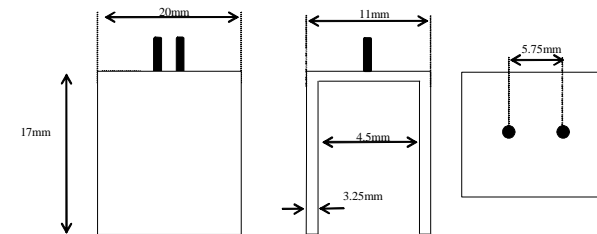
Left Base Diagram:



Material: Alumina

A208-06-CP0 HD T10 Crimp Base

Right Base Diagram:



Material: Alumina

**Lamp Characteristics**

(A) Base Face: 1200 mm +/- 3mm  
 (B) ARC: 1130  
 (C) Bulb Diameter: 25  
 (X) Amalgam  
 Glass Type: L (Non Ozone) Coating: A11-QC-001  
 If Spliced: L mm VH mm  
 (Y)

Operating Current: 3A  
 Lamp Voltage: 68V  
 Lamp Wattage: 200W



**UV Output**

Output UVC Watts	Output $\mu$ /cm <sup>2</sup> @ 1 Meter	Rated Life (hrs)	% Output @EOL	Output Notes Field	Ballast Used for Measurements
67	550	12000	80.00%		03-EB-246
65	540	9000	60.00%		ZED 3.5
67	500	12000	80.00%		03-EB-246

**First Light**  
 PO Box 191, 212 Ideal Way  
 Poultney, VT 05764 USA  
 Phone-(802) 287-4195 Fax-(802) 287-4489  
 www.firstlightusa.com  
 email: sales@firstlightusa.com

\*UV Output is based on lamps measured after 100 hours of operation under lab conditions. These values are subject to wide variations under application/field conditions.

\*\*\*UV Output is measured at 254 nm\*\*\*

\*\*Rated Life is for reference purposes only and is based on a group of lamps operating under lab conditions. Actual life depends on the operating conditions of the lamp.

12/16/2011

12:45:02 PM