

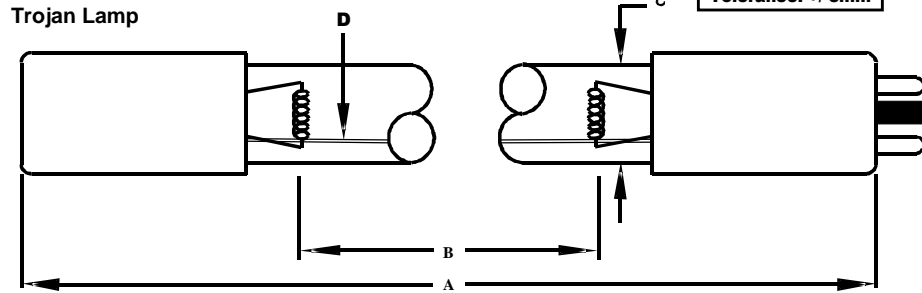
Lamp Type: G64T5LCA/HO/2TC

Spec Number:

2678

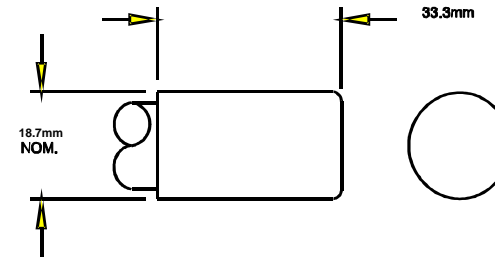
Engineering Specification Sheet

Lamp Diagram:



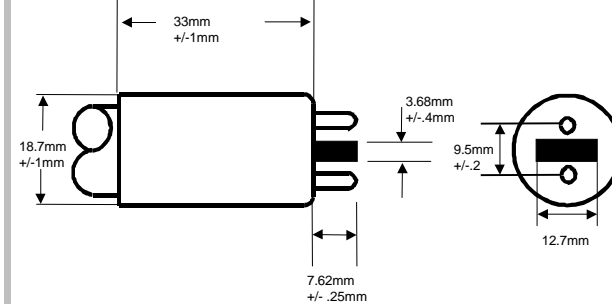
A08-62-C00 HD No Hole Base

Left Base Diagram:



Right Base Diagram:

A08-63-CP0 HD Trojan Base



Pin: 08-PN-006

Lamp Characteristics

(A) Base Face:	1554	mm	Operating Current	780mA
(B) ARC:	1478	mm	Lamp Voltage:	170V
(C) Bulb Diameter:	15	mm	Lamp Wattage:	130W
(X)				
Glass Type:	L (Non-Ozone)	Coating:	A11-QC-001	
If Spliced:	L	mm	VH	mm
(Y)				



UV Output

Output UVC Watts	Output μ /cm ² @ 1 Meter	Rated Life (hrs)	% Output @EOL	Output Notes Field	Ballast Used for Measurements
55	400	12000	80.00%		LCG800-240

First Light
 PO Box 191, 212 Ideal Way
 Poultney, VT 05764 USA
 Phone-(802) 287-4195 Fax-(802) 287-4489
 www.firstlightusa.com
 email: sales@firstlightusa.com

*UV Output is based on lamps measured after 100 hours of operation under lab conditions. These values are subject to wide variations under application/field conditions.
 UV Output is measured at 254 nm
 **Rated Life is for reference purposes only and is based on a group of lamps operating under lab conditions. Actual life depends on the operating conditions of the lamp.

12/16/2011
 12:18:22 PM