

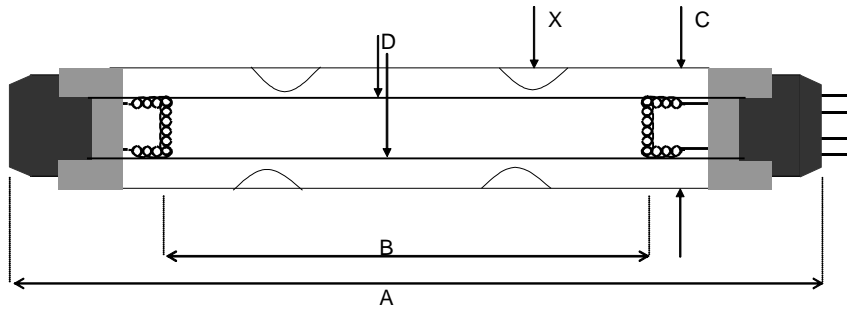
Lamp Type: GIA985T8LCA/2S13/CB-024
XLR-20

Spec Number:
3105

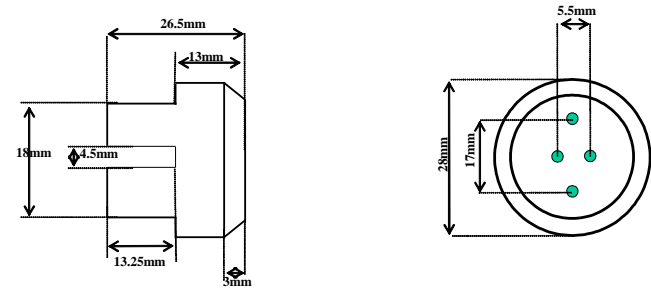
Engineering Specification Sheet

Lamp Diagram:
Wedeco 32143/4P

Tolerance: +/-3mm



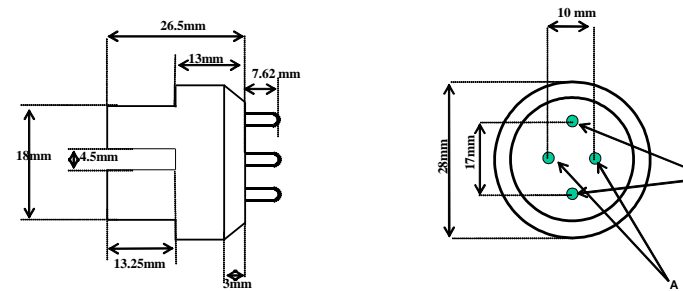
Left Base Diagram:
A208-12-C00 Four Pin Base White w/o Pins



Material: Aluminum - White

Right Base Diagram:

A208-24-CP0 XLR-30 Base White



Pin:

Lamp Characteristics

(A) Base Face:	985	mm		
(B) ARC:	890	mm	Operating Current	3.0a
(C) Bulb Diameter	25.5	mm	Lamp Voltage	57v
(X) Amalgam Place dots at	250	mm	Lamp Wattage	170ww
Glass Type:	L (Non Ozone)	Coating:	A11-QC-001	
If Spliced:	L	mm	VH	mm
(Y)				

UV Output - Certified to be true. Kenneth A. Ell, President

Output UVC Watts	micro/watt	/cm ² @ 1 Meter	Rated Life (hrs)	% Output @EOL	Output Notes Field	Ballast Used for Measurements
62		525	12000	80.00%		03-EB-246

First Light
212 Ideal Way
Poultney, VT 05764 USA
Phone-(802) 287-4195 Fax-(802) 287-4489
www.firstlightusa.com
email: sales@firstlightusa.com

*UV Output is based on lamps measured after 100 hours of operation under lab conditions. These values are subject to wide variations under application/field conditions.
UV Output is measured at 254 nm
**Rated Life is for reference purposes only and is based on a group of lamps operating under lab conditions. Actual life depends on the operating conditions of the lamp.

8/10/2016
9:33:28 AM

This data includes matters which are trade secrets of First Light Technologies, Inc., or Proprietary or Confidential to First Light Technologies, Inc. and shall not be reproduced or disclosed in whole or part, or used in any manner except in connection with First Light Technologies, Inc. business, without the written permission of First Light Technologies, Inc.