

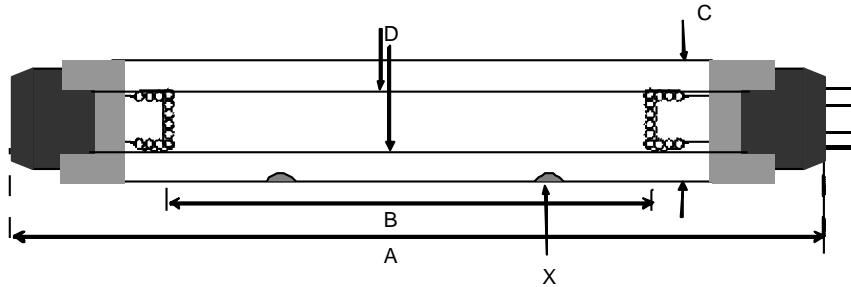
Lamp Type: GIA970T8LCA/2S13/CB-012
SLR2690

Spec Number:
3177

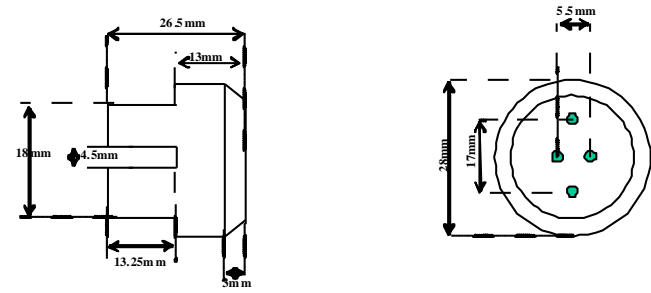
Engineering Specification Sheet

Lamp Diagram:
Wedeco 32143/4P

Tolerance: +/-3mm

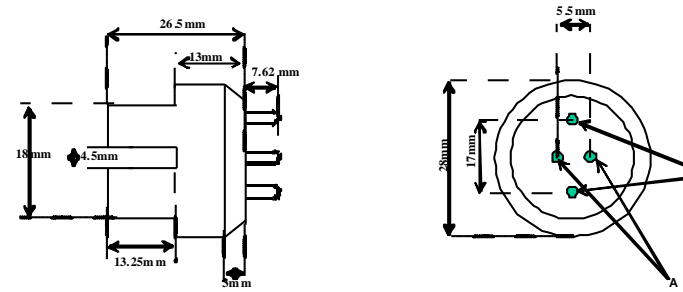


A208-12-C00 Four Pin Base White w/o Pins
Left Base Diagram:



Material: Aluminum - White

A208-12-CP0 T10 Four Pin Base White
Right Base Diagram:



Pin:

Lamp Characteristics

(A) Base Face:	970	mm	+/- 3		
(B) ARC:	895			Operating Current	3.0a
(C) Bulb Diameter	25.5			Lamp Voltage	57v
(X) Amalgam (Place dots at 250mm)				Lamp Wattage	170w
Glass Type:	L (Non Ozone)	Coating:	A11-QC-001		
If Spliced:	L	mm	VH	mm	
	(Y)				

First Light

UV Output - Certified to be true. Kenneth A. Ell, President

Output UVC Watts	micro/watt	/cm^2 @ 1 Meter	Rated Life (hrs)	% Output @EOL	Output Notes Field	Ballast Used for Measurements
70		600	12000	80.00%		03-EB-246

212 Ideal Way
Poultney, VT 05764 USA
Phone-(802) 287-4195 Fax-(802) 287-4489
www.firstlightusa.com
email: sales@firstlightusa.com

*UV Output is based on lamps measured after 100 hours of operation under lab conditions. These values are subject to wide variations under application/field conditions.
UV Output is measured at 254 nm
**Rated Life is for reference purposes only and is based on a group of lamps operating under lab conditions. Actual life depends on the operating conditions of the lamp.

8/10/2016
9:33:05 AM

This data includes matters which are trade secrets of First Light Technologies, Inc., or Proprietary or Confidential to First Light Technologies, Inc. and shall not be reproduced or disclosed in whole or part, or used in any manner except in connection with First Light Technologies, Inc. business, without the written permission of First Light Technologies, Inc.