

Lamp Type: GSL843T5LCA/CB-0M9B

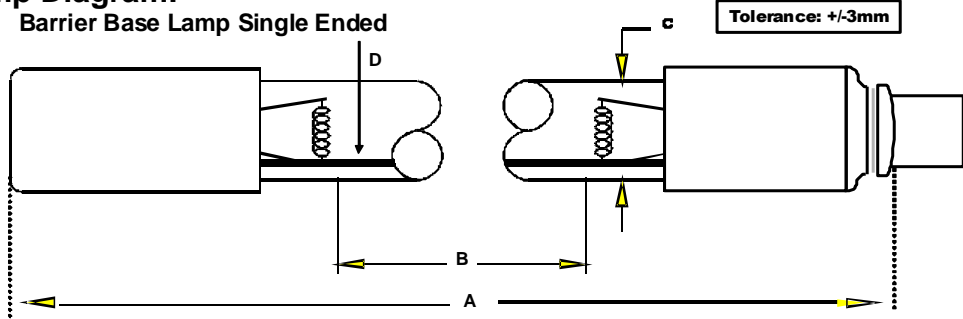
Spec Number:

3194

Engineering Specification Sheet

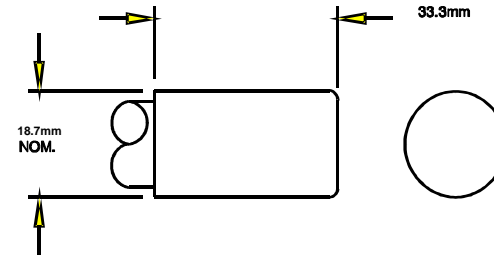
Lamp Diagram:

Barrier Base Lamp Single Ended



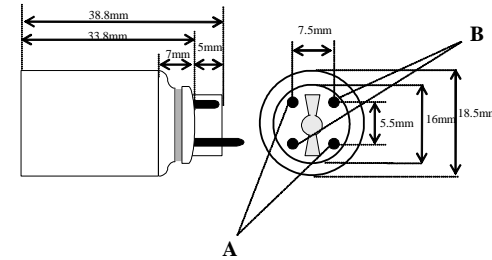
08-CB-062 HD No Hole Base

Left Base Diagram:



Right Base Diagram:

A08-N0-CP0 Aftermarket Photoscience Base w Circuit Interrupt



A: 08-PN-006 (Short)  
B: 08-PN-010 (Long)

Lamp Characteristics

(A) Base Face:	843	mm	+/- 3		
(B) ARC:	767	mm		Operating Current	420mA
(C) Bulb Diameter	15	mm		Lamp Voltage	100v
(X)				Lamp Wattage	40w
Glass Type:	L (Non Ozone)	Coating:	A11-QC-001		
<b>If Spliced:</b>	L	mm	VH	mm	
(Y)					

UV Output - Certified to be true. Kenneth A. Ell, President

Output UVC Watts	micro/watt	/cm <sup>2</sup> @ 1 Meter	Rated Life (hrs)	% Output @EOL	Output Notes Field	Ballast Used for Measurements
19		180	12000	80.00%		REI2G64G6MV

**First Light**  
212 Ideal Way  
Poultney, VT 05764 USA  
Phone-(802) 287-4195 Fax-(802) 287-4489  
www.firstlightusa.com  
email: sales@firstlightusa.com

\*UV Output is based on lamps measured after 100 hours of operation under lab conditions. These values are subject to wide variations under application/field conditions.  
\*\*\*UV Output is measured at 254 nm\*\*\*  
\*\*Rated Life is for reference purposes only and is based on a group of lamps operating under lab conditions. Actual life depends on the operating conditions of the lamp.

7/10/2018  
3:04:50 PM

This data includes matters which are trade secrets of First Light Technologies, Inc., or Proprietary or Confidential to First Light Technologies, Inc. and shall not be reproduced or disclosed in whole or part, or used in any manner except in connection with First Light Technologies, Inc. business, without the written permission of First Light Technologies, Inc.