

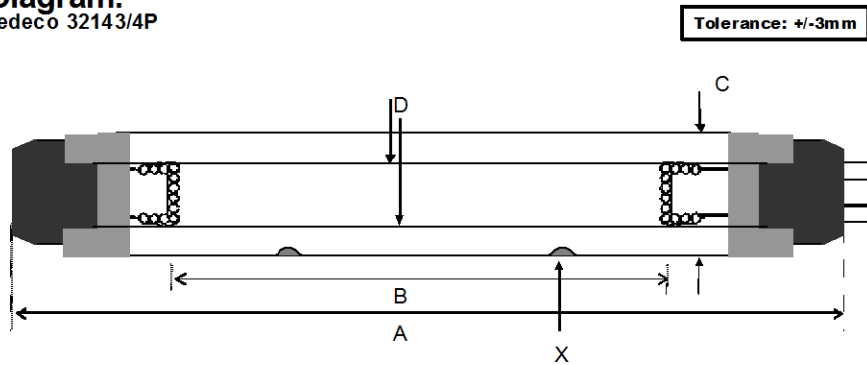
Lamp Type: GIA1800T12LCA/2S23/4C

Spec Number:

Engineering Specification Sheet

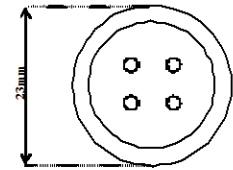
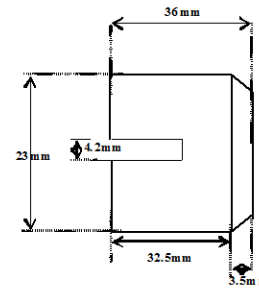
3216

Lamp Diagram:
Wedeco 32143/4P



T9 DB350 Base White w/o Pins

Left Base Diagram:

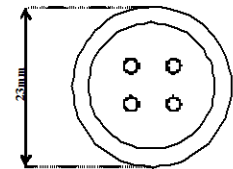
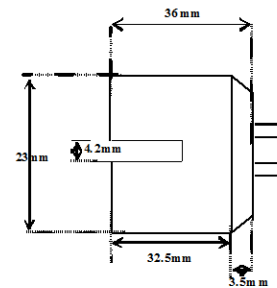


Material: Aluminum - White

Right Base Diagram:

208-CB-018 T9 DB350 Base White

208-PC-018 T9 DB350 Base White Provided with Vendor Pin



Pin:
1.00 DN 000

Lamp Characteristics

(A) Base Face:	1800	mm	+/-3		
(B) ARC:	1645			Operating Current	8.0a
(C) Bulb Diameter	38			Lamp Voltage:	100v
(X) Indium Assembly				Lamp Wattage:	800w
Glass Type:	L (Non Ozone)	Coating:	A11-QC-001		
If Spliced:	L	mm	VH	mm	
(Y)					



UV Output

Output UVC Watts	Output μ /cm ² @ 1 Meter	Rated Life (hrs)	% Output @EOL	Output Notes Field	Ballast Used for Measurements
225	1600	9000	80.00%		EVG1200



PO Box 191, 212 Ideal Way
Poultney, VT 05764 USA
Phone-(802) 287-4195 Fax-(802) 287-4489
www.firstlightusa.com
email: sales@firstlightusa.com

*UV Output is based on lamps measured after 100 hours of operation under lab conditions.

These values are subject to wide variations under application/field conditions.

UV Output is measured at 254 nm

**Rated Life is for reference purposes only and is based on a group of lamps operating under lab conditions. Actual life depends on the operating conditions of the lamp.

3/9/2014

10:11:12 AM