

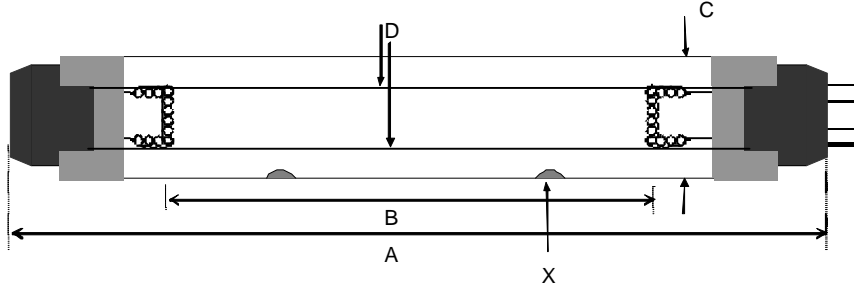
Lamp Type: GIA1512T9LCA/HO/CB-012
SLR32143HP (R1)

Spec Number:
3383

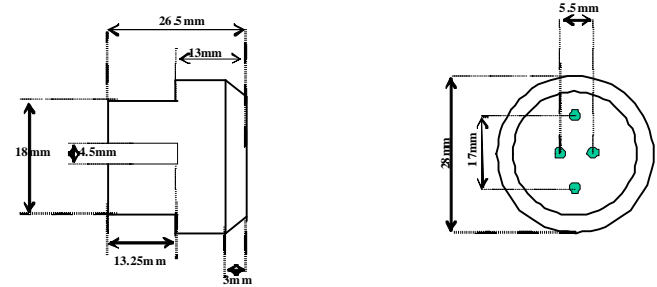
Engineering Specification Sheet

Lamp Diagram:
Wedeco 32143/4P

Tolerance: +/- 3mm

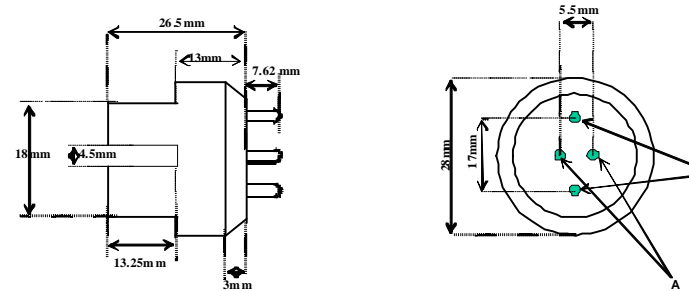


Left Base Diagram:
A208-12-C00 Four Pin Base White w/o Pins



Material: Aluminum - White

Right Base Diagram:
A208-12-CP0 T10 Four Pin Base White



Pin:
A208-12-CP0

Lamp Characteristics

(A) Base Face: 1512 mm
 (B) ARC: 1430 mm
 (C) Bulb Diameter: 28 mm
 (X) Amalgam
 Glass Type: L (Non Ozone) Coating: A11-QC-001
 If Spliced: L mm VH mm
 (Y) mm

Operating Current: 3.5a
 Lamp Voltage: 95v
 Lamp Wattage: 330w



UV Output

Output UVC Watts	Output μ /cm ² @ 1 Meter	Rated Life (hrs)	% Output @EOL	Output Notes Field	Ballast Used for Measurements
140	750	12000	80.00%		03-EB-238

First Light
 PO Box 191, 212 Ideal Way
 Poultney, VT 05764 USA
 Phone-(802) 287-4195 Fax-(802) 287-4489
 www.firstlightusa.com
 email: sales@firstlightusa.com

*UV Output is based on lamps measured after 100 hours of operation under lab conditions. These values are subject to wide variations under application/field conditions.
 UV Output is measured at 254 nm
 **Rated Life is for reference purposes only and is based on a group of lamps operating under lab conditions. Actual life depends on the operating conditions of the lamp.

12/16/2011
12:43:52 PM

This data includes matters which are trade secrets of First Light Technologies, Inc., or Proprietary or Confidential to First Light Technologies, Inc. and shall not be reproduced or disclosed in whole or part, or used in any manner except in connection with First Light Technologies, Inc. business, without the written permission of First Light Technologies, Inc.