

Lamp Type: GIA1550T9LCA/HO/CB-041

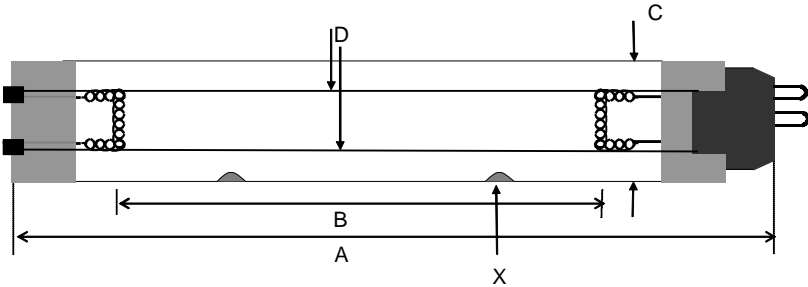
Spec Number:

Engineering Specification Sheet

3404

Lamp Diagram:
Amalgam Single Offset Base Lamp

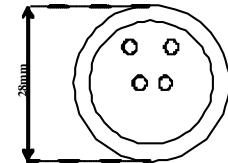
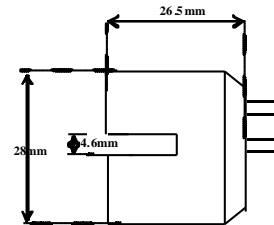
Tolerance: +/-3mm



Left Base Diagram:

Right Base Diagram:

208-CB-041 Offset Four Pin Base
208-PC-041 Offset Four Pin Base Provided with Vendor Pin



Material: Aluminum - White

Lamp Characteristics

(A) Base Face:	1550	mm	+/- 3		
(B) ARC:	1470			Operating Current	3.8a
(C) Bulb Diameter	28			Lamp Voltage	110v
(X) Amalgam				Lamp Wattage	400w
Glass Type:	L (Non Ozone)	Coating:	A11-QC-001		
If Spliced:	L	mm	VH	mm	
(Y)					



UV Output - Certified to be true. Kenneth A. Ell, President

Output UVC Watts	micro/watt	/cm ² @ 1 Meter	Rated Life (hrs)	% Output @EOL	Output Notes Field	Ballast Used for Measurements
135		1160	12000	80.00%		EVG400/3.8

First Light
212 Ideal Way
Poultney, VT 05764 USA
Phone-(802) 287-4195 Fax-(802) 287-4489
www.firstlightusa.com
email: sales@firstlightusa.com

*UV Output is based on lamps measured after 100 hours of operation under lab conditions. These values are subject to wide variations under application/field conditions.
UV Output is measured at 254 nm
**Rated Life is for reference purposes only and is based on a group of lamps operating under lab conditions. Actual life depends on the operating conditions of the lamp.

7/10/2018
3:21:23 PM

This data includes matters which are trade secrets of First Light Technologies, Inc., or Proprietary or Confidential to First Light Technologies, Inc. and shall not be reproduced or disclosed in whole or part, or used in any manner except in connection with First Light Technologies, Inc. business, without the written permission of First Light Technologies, Inc.