

Lamp Type: GIA1512T9LCA/CB-012
SLR32143

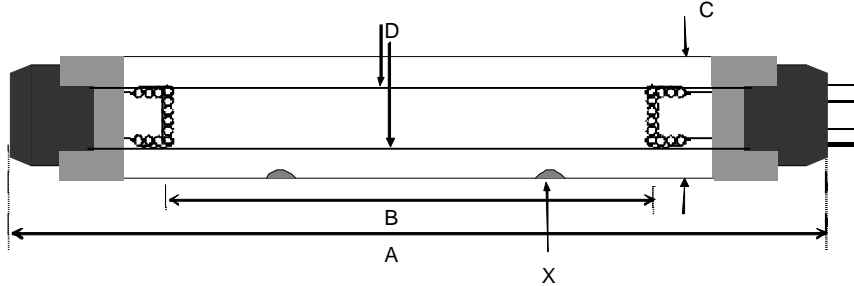
Spec Number:

3422

Engineering Specification Sheet

Lamp Diagram:
Wedeco 32143/4P

Tolerance: +/- 3mm

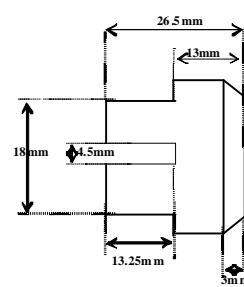


Lamp Characteristics

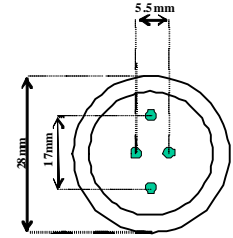
(A) Base Face: 1512 mm +/- 3
 (B) ARC: 1436
 (C) Bulb Diameter: 28
 (X) Amalgam
 Glass Type: L (Non Ozone) Coating: A11-QC-001
 Operating Current: 3.8a
 Lamp Voltage: 72v
 Lamp Wattage: 270w
 If Spliced: L mm VH mm
 (Y) mm



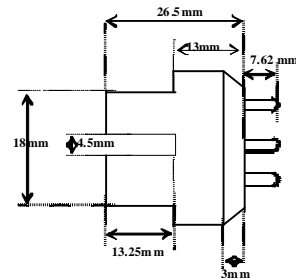
Left Base Diagram:
A208-12-C00 Four Pin Base White w/o Pins



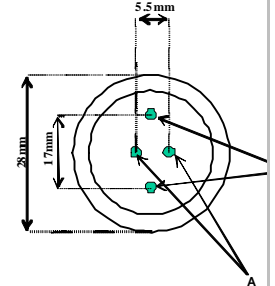
Material: Aluminum - White



Right Base Diagram:
A208-12-CP0 T10 Four Pin Base White



Pin: A208-12-CP0



UV Output

| Output UVC Watts | Output μ /cm ² @ 1 Meter | Rated Life (hrs) | % Output @EOL | Output Notes Field | Ballast Used for Measurements |
|------------------|---|------------------|---------------|--------------------|-------------------------------|
| 129 | 650 | 12000 | 80.00% | | 03-eB-238 |

First Light
 PO Box 191, 212 Ideal Way
 Poultney, VT 05764 USA
 Phone-(802) 287-4195 Fax-(802) 287-4489
 www.firstlightusa.com
 email: sales@firstlightusa.com

*UV Output is based on lamps measured after 100 hours of operation under lab conditions. These values are subject to wide variations under application/field conditions.
 UV Output is measured at 254 nm
 **Rated Life is for reference purposes only and is based on a group of lamps operating under lab conditions. Actual life depends on the operating conditions of the lamp.

3/28/2012
12:05:32 PM

This data includes matters which are trade secrets of First Light Technologies, Inc., or Proprietary or Confidential to First Light Technologies, Inc. and shall not be reproduced or disclosed in whole or part, or used in any manner except in connection with First Light Technologies, Inc. business, without the written permission of First Light Technologies, Inc.