

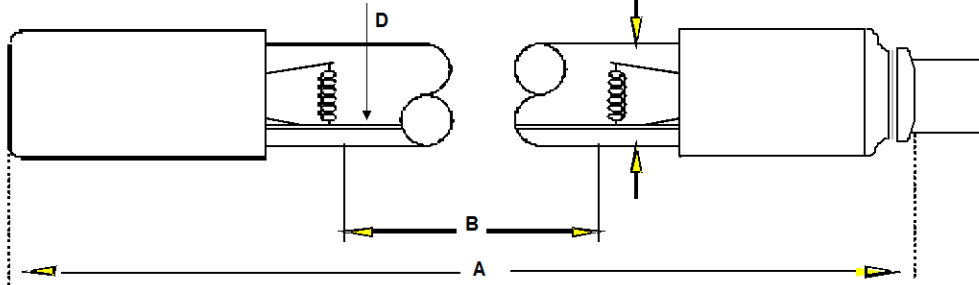
**Lamp Type:** GSL1554T5LCA/M12/CB-0M9  
replaces CO91/WS

**Spec Number:**  
3911

*Engineering Specification Sheet*

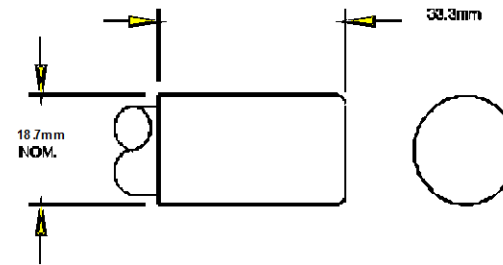
**Lamp Diagram:**

Barrier Base Lamp Single Ended



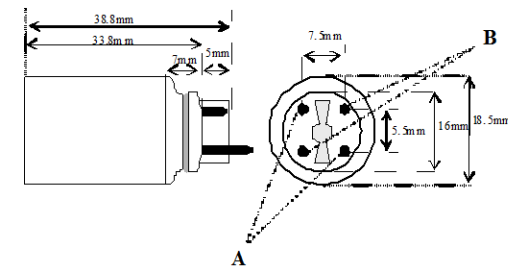
**A08-62-C00 HD No Hole Base**

**Left Base Diagram:**



**Right Base Diagram:**

**A08-M9-CP0 Aftermarket Photoscience Base**



A: 08-PN-006 (Short)  
B: 08-PN-010 (Long)

**Lamp Characteristics**

(A) Base Face:	1554	mm	+/- 3		
(B) ARC:	1478			Operating Current	800ma.
(C) Bulb Diameter	15			Lamp Voltage	170v
(X)				Lamp Wattage	135w
Glass Type:	L (Non Ozone)		Coating:	A11-QC-001	
<b>If Spliced:</b>	L	mm	VH	mm	
	(Y)				

**UV Output - Certified to be true. Kenneth A. Ell, President**

Output UVC Watts	Output $\mu$ /cm <sup>2</sup> @ 1 Meter	Rated Life (hrs)	% Output @EOL	Output Notes Field	Ballast Used for Measurements
54	395	12000	80.00%		LCG800-240V



212 Ideal Way  
Poultney, VT 05764 USA  
Phone-(802) 287-4195 Fax-(802) 287-4489  
www.firstlightusa.com  
email: sales@firstlightusa.com

\*UV Output is based on lamps measured after 100 hours of operation under lab conditions. These values are subject to wide variations under application/field conditions.

11/12/2015

\*\*\*UV Output is measured at 254 nm\*\*\*

8:30:03 AM

\*\*Rated Life is for reference purposes only and is based on a group of lamps operating under lab conditions. Actual life depends on the operating conditions of the lamp.