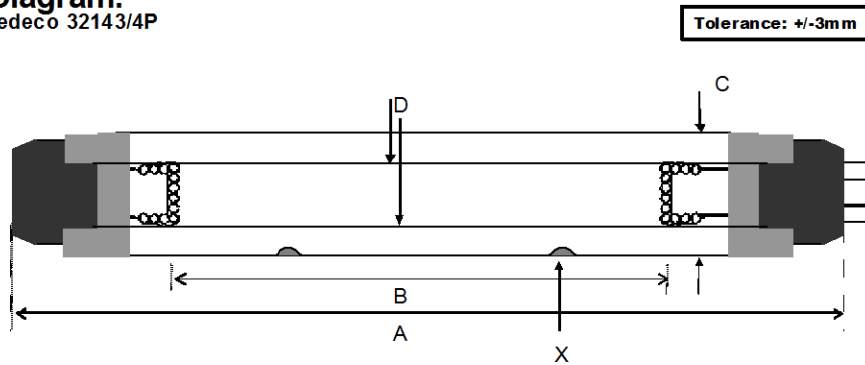


Lamp Type: GIA1200T8LCA/2S13/CB-024
WLR-20 42074)

Spec Number:
3940

Engineering Specification Sheet

Lamp Diagram:
Wedeco 32143/4P

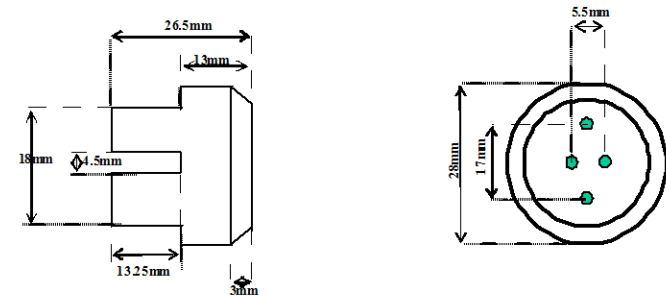


Lamp Characteristics

(A) Base Face:	1215	mm	+/-3		
(B) ARC:	1120			Operating Current	3.0
(C) Bulb Diameter	25.5			Lamp Voltage	80v
(X) Amalgam				Lamp Wattage	210w
Glass Type:	L (Non Ozone)	Coating	A11-QC-001		
If Spliced:	L	mm	VH	mm	
	(Y)				



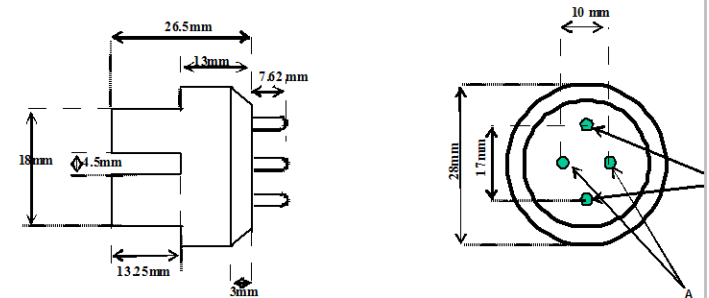
A208-12-C00 Four Pin Base White w/o Pins
Left Base Diagram:



Material: Aluminum - White

Right Base Diagram

A208-24-CP0 XLR-30 Base White



Pin:
1-20-00-000

UV Output

Output UVC Watts	Output μ /cm ² @ 1 Meter	Rated Life (hrs)	% Output @EOL	Output Notes Field	Ballast Used for Measurements
75	600	12000	80.00%		03-EB-237



PO Box 191, 212 Ideal Way
Poultney, VT 05764 USA
Phone-(802) 287-4195 Fax-(802) 287-4489
www.firstlightusa.com
email: sales@firstlightusa.com

*UV Output is based on lamps measured after 100 hours of operation under lab conditions. These values are subject to wide variations under application/field conditions.

4/11/2014

UV Output is measured at 254 nm

10:49:18 AM

**Rated Life is for reference purposes only and is based on a group of lamps operating under lab conditions. Actual life depends on the operating conditions of the lamp.