

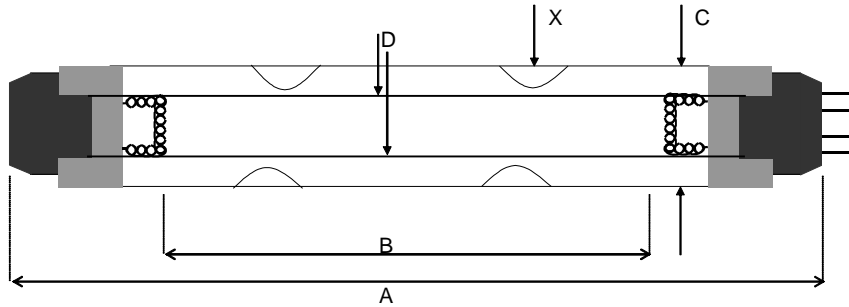
Lamp Type: GIA1512T10LCA/HO/CB-012
(Replaces ELR 30)

Spec Number:
4265

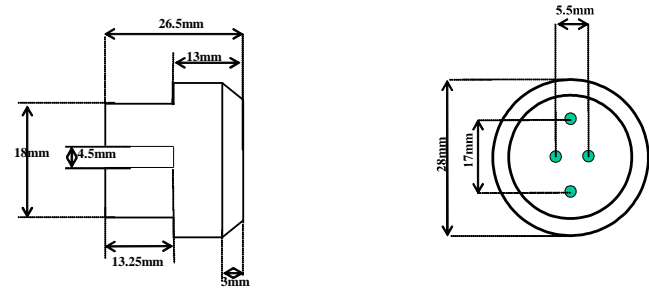
Engineering Specification Sheet

Lamp Diagram:
Wedeco 32143/4P

Tolerance: +/-3mm

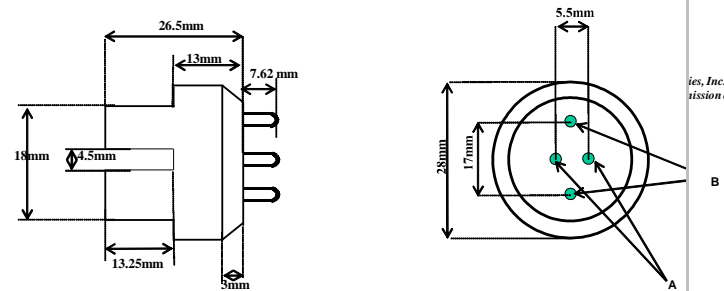


Left Base Diagram:
A208-12-C00 Four Pin Base White w/o Pins



Material: Aluminum - White

Right Base Diagram:
A208-12-CP0 T10 Four Pin Base White



Pin:
A: 08-PN-008
B: 08-PN-014
Material: Aluminum - White

Lamp Characteristics

(A) Base Face:	1512 mm	+/- 3		
(B) ARC:	1430		Operating Current	3.5a
(C) Bulb Diameter	32		Lamp Voltage	85v
(X) Amalgam			Lamp Wattage	295w
Glass Type:	L (Non Ozone)	Coating:	A11-QC-001	

This data includes matters which are trade secrets of First Light Technologies, Inc., or Proprietary or Confidential to First Light Technologies, Inc. and shall not be reproduced or disclosed in whole or part, or used in any manner except in connection with First Light Technologies, Inc. business, without the written permission of First Light Technologies, Inc.

If Spliced: L mm VH mm

(Y) mm
3/1/2018 Wedeco 32143/174P

UV Output - Certified to be true. Kenneth A. Ell, President

Output UVC Watts	micro/watt /cm ² @ 1 Meter	Rated Life (hrs)	% Output @EOL	Output Notes Field	Ballast Used for Measurements
140	750	14000	80.00%		03-EB-238

This data includes matters which are trade secrets of First Light Technologies, Inc., or Proprietary or Confidential to First Light Technologies, Inc. and shall not be reproduced or disclosed in whole or part, or used in any manner except in connection with First Light Technologies, Inc. business, without the written permission of First Light Technologies, Inc.

3/1/2018 A208-12-CP0 T10 Four Pin Base White

First Light
212 Ideal Way
Poultney, VT 05764 USA
Phone-(802) 287-4195 Fax-(802) 287-4489
www.firstlightusa.com
email: sales@firstlightusa.com

*UV Output is based on lamps measured after 100 hours of operation under lab conditions. These values are subject to wide variations under application/field conditions.
UV Output is measured at 254 nm
**Rated Life is for reference purposes only and is based on a group of lamps operating under lab conditions. Actual life depends on the operating conditions of the lamp.

3/6/2018
11:26:46 AM

This data includes matters which are trade secrets of First Light Technologies, Inc., or Proprietary or Confidential to First Light Technologies, Inc. and shall not be reproduced or disclosed in whole or part, or used in any manner except in connection with First Light Technologies, Inc. business, without the written permission of First Light Technologies, Inc.