

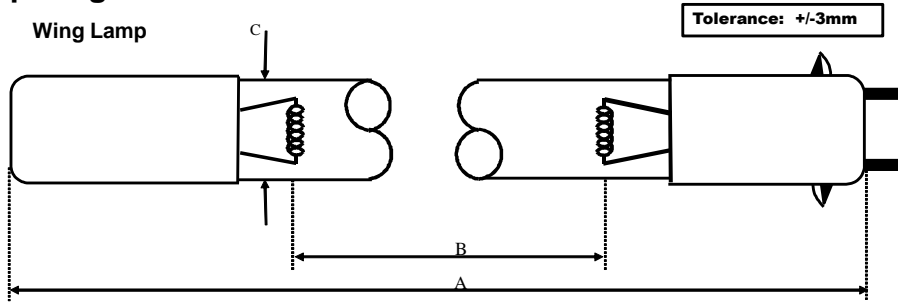
Lamp Type: GSL1566T5LCA/HO/CB-0J6

Spec Number:

4285

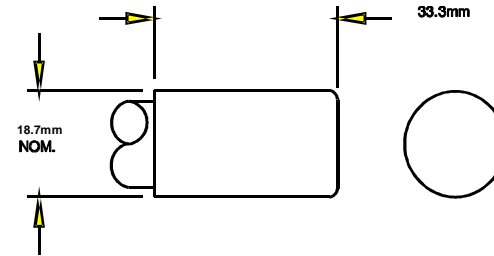
Engineering Specification Sheet

Lamp Diagram:



A08-62-C00 HD No Hole Base

Left Base Diagram:

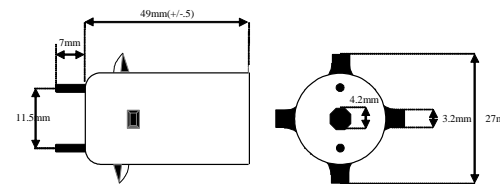


Lamp Characteristics

(A) Base Face:	1567	mm	+ .76/-3		
(B) ARC:	1450			Operating Current	780ma.
(C) Bulb Diameter	15			Lamp Voltage	170v
(X)				Lamp Wattage	130w
Glass Type:	L (Non Ozone)	Coating:	A11-QC-001		
If Spliced:	L	mm	VH	mm	
(Y)					

A08-J6-CP0 Four Wing Base

Right Base Diagram:



UV Output - Certified to be true. Kenneth A. Ell, President

Output UVC Watts	micro/watt	/cm^2 @ 1 Meter	Rated Life (hrs)	% Output @EOL	Output Notes Field	Ballast Used for Measurements
54		395	12000	80.00%		REI2G64G6HOMV

First Light
 212 Ideal Way
 Poultney, VT 05764 USA
 Phone-(802) 287-4195 Fax-(802) 287-4489
 www.firstlightusa.com
 email: sales@firstlightusa.com

*UV Output is based on lamps measured after 100 hours of operation under lab conditions. These values are subject to wide variations under application/field conditions.
 UV Output is measured at 254 nm
 **Rated Life is for reference purposes only and is based on a group of lamps operating under lab conditions. Actual life depends on the operating conditions of the lamp.

9/11/2018
 4:43:24 PM

This data includes matters which are trade secrets of First Light Technologies, Inc., or Proprietary or Confidential to First Light Technologies, Inc. and shall not be reproduced or disclosed in whole or part, or used in any manner except in connection with First Light Technologies, Inc. business, without the written permission of First Light Technologies, Inc.